

PROPOSED LME DESIGN EDGE (m)	PROPOSED RME PROFILE LEVEL (m)	EXISTING GROUND LEVEL LME(m)	EXISTING GROUND LEVEL RME (m)	EXISTING 20M LEFT GROUND LEVEL (m)	EXISTING 20M RIGHT GROUND LEVEL (m)	HORIZONTAL ALIGNMENT	VERTICAL GEOMETRY LME	VERTICAL GEOMETRY RME	STATION (m)
126.980	126.980	126.693	126.550	125.844	125.891				33+000.000
127.029	127.029	126.763	126.706	125.933	125.933				33+025.000
127.078	127.078	126.801	126.735	125.774	125.774				33+050.000
127.127	127.127	126.798	126.688	125.616	125.616				33+075.000
127.176	127.176	126.799	126.685	125.458	125.458				33+100.000
127.233	127.233	126.847	126.616	125.299	125.299				33+125.000
127.309	127.309	126.900	126.700	125.141	125.141				33+150.000
127.403	127.403	126.959	126.837	124.983	124.983				33+175.000
127.500	127.500	127.000	126.896	124.824	124.824				33+200.000
127.596	127.596	127.058	126.870	124.666	124.666				33+225.000
127.693	127.693	127.232	127.016	124.508	124.508				33+250.000
127.789	127.789	127.500	127.450	124.350	124.350				33+275.000
127.886	127.886	127.510	127.281	124.192	124.192				33+300.000
127.982	127.982	127.319	127.093	124.034	124.034				33+325.000
128.078	128.078	127.630	127.630	123.876	123.876				33+350.000
128.175	128.175	127.678	127.678	123.718	123.718				33+375.000
128.271	128.271			123.560	123.560				33+400.000
128.368	128.368	128.205	128.205	123.402	123.402				33+425.000
128.458	128.458	127.997	127.997	123.244	123.244				33+450.000
128.548	128.548	127.946	127.946	123.086	123.086				33+475.000
128.594	128.594	128.011	128.011	122.928	122.928				33+500.000
128.685	128.685	128.146	128.146	122.770	122.770				33+525.000
128.735	128.735	128.244	128.244	122.612	122.612				33+550.000
128.794	128.794	128.364	128.364	122.454	122.454				33+575.000
128.863	128.863	128.454	128.454	122.296	122.296				33+600.000
128.854	128.854	128.508	128.508	122.138	122.138				33+625.000
128.895	128.895	128.594	128.594	121.980	121.980				33+650.000
128.944	128.944	128.679	128.679	121.822	121.822				33+675.000
129.011	129.011	128.794	128.794	121.664	121.664				33+700.000
129.093	129.093	128.896	128.896	121.506	121.506				33+725.000
129.108	129.108	129.011	129.011	121.348	121.348				33+750.000
129.248	129.248	129.146	129.146	121.190	121.190				33+775.000
129.259	129.259	129.244	129.244	121.032	121.032				33+800.000
129.281	129.281	129.299	129.299	120.874	120.874				33+825.000
129.318	129.318	129.369	129.369	120.716	120.716				33+850.000
129.350	129.350	129.410	129.410	120.558	120.558				33+875.000
129.350	129.350	129.457	129.457	120.400	120.400				33+900.000
129.350	129.350	129.498	129.498	120.242	120.242				33+925.000
129.350	129.350	129.544	129.544	120.084	120.084				33+950.000
129.350	129.350	129.585	129.585	119.926	119.926				33+975.000
129.350	129.350	129.621	129.621	119.768	119.768				34+000.000

PATH: C:\Users\vikaw\Documents\OTHER\NH515 Section 2\NH515 S2\6.PLAN PROFILE\Sheet\_NH-515 section2.dwg

CLIENT : **NATIONAL HIGHWAYS AND INFRASTRUCTURE DEVELOPMENT CORPORATION LTD. (MINISTRY OF ROAD TRANSPORT AND HIGHWAYS) GOVERNMENT OF INDIA**

PROJECT : **CONSULTANCY SERVICES FOR PREPARATION OF DETAILED PROJECT REPORT FOR DEVELOPMENT OF ECONOMIC CORRIDORS, INTER CORRIDORS AND FEEDER ROUTES TO IMPROVE THE EFFICIENCY OF FREIGHT MOVEMENTS IN INDIA UNDER BHARATMALA PARIYOJANA (LOT-1:PACKAGE IV)**

DESIGN CONSULTANT: **VOYANTS SOLUTIONS PVT LTD.**  
 403, 4th Floor, Park Centra, Sector-30, NH-8 Gurugram-122001, Haryana, India  
 CIN: U74140HR2004PTC046918  
 Ph: 0124-4598200, Fax: 0124-4019051, E-mail: info@voyants.in, www.voyants.in

**Detailed Project Report**

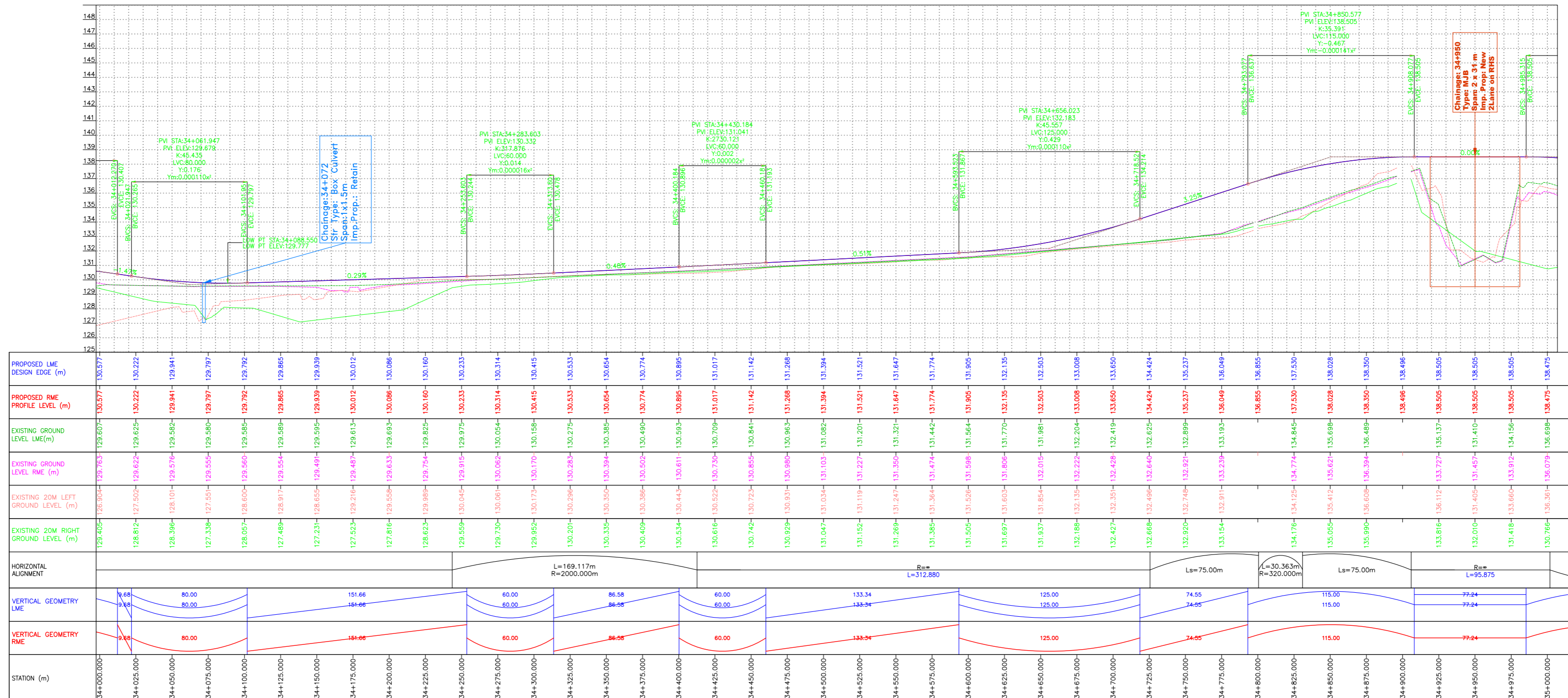
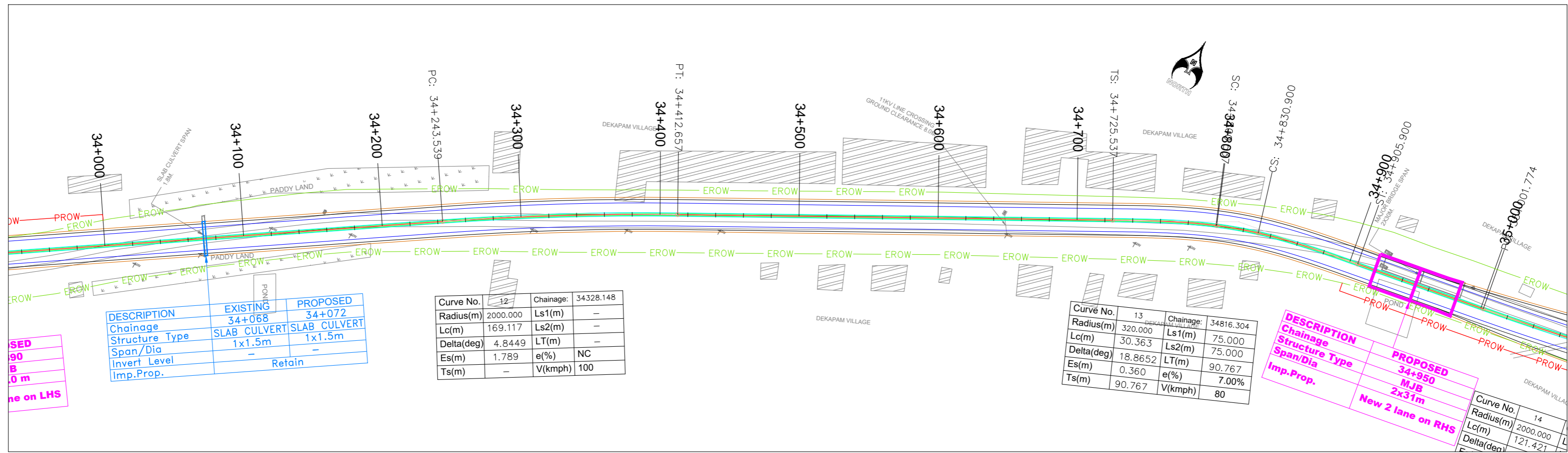
REV.	DATE	DESCRIPTION

DESIGNED BY	DRAWN BY	CHECKED BY	APPROVED BY
PD/PS	SS/SP	DGR	SKC
<i>[Signature]</i>	<i>[Signature]</i>	<i>[Signature]</i>	<i>[Signature]</i>
SCALE :	HOR 1:2500 VER 1:250	SHEET SIZE	A2

TITLE : **Plan and Profile (km 33+000 to km 34+000)**

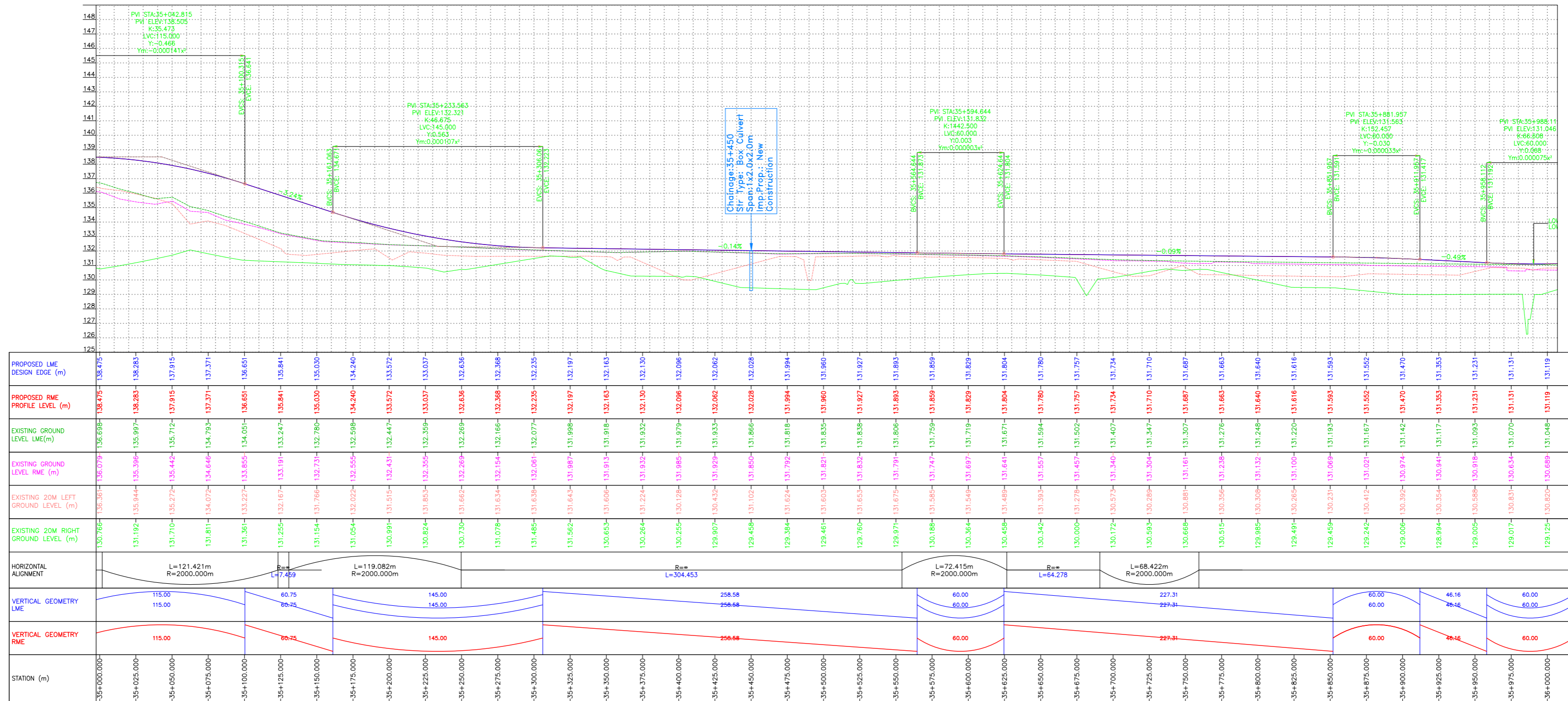
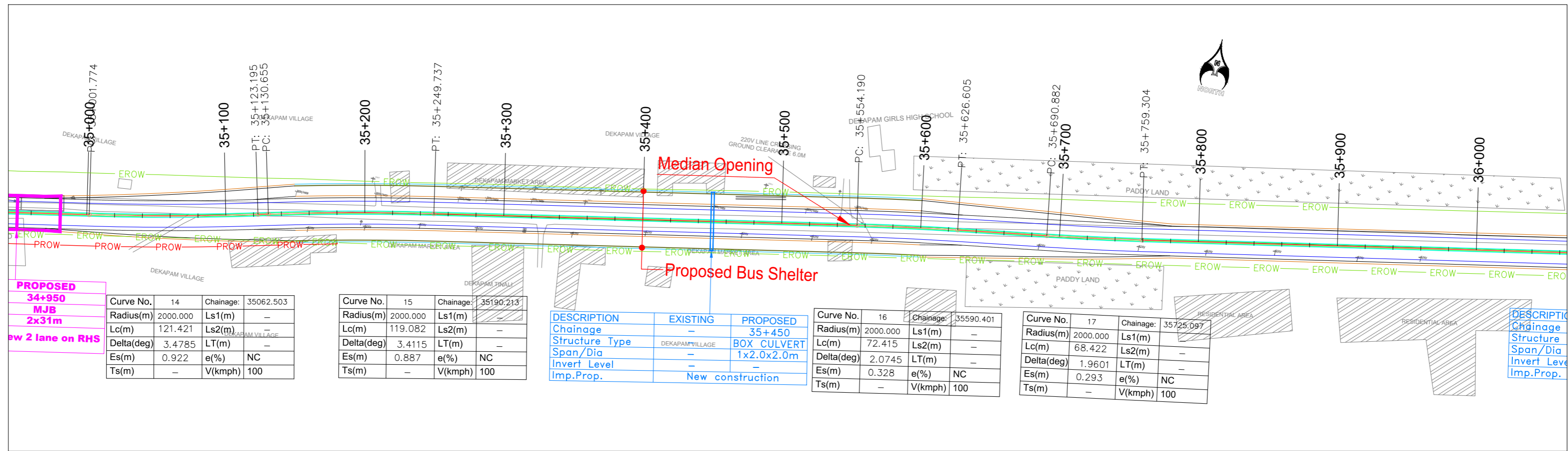
DRG. No. : **VSP/1718-082/DPR/PKG-4/NH-515/S2/PP-06**

REVISION:R1 December 2022



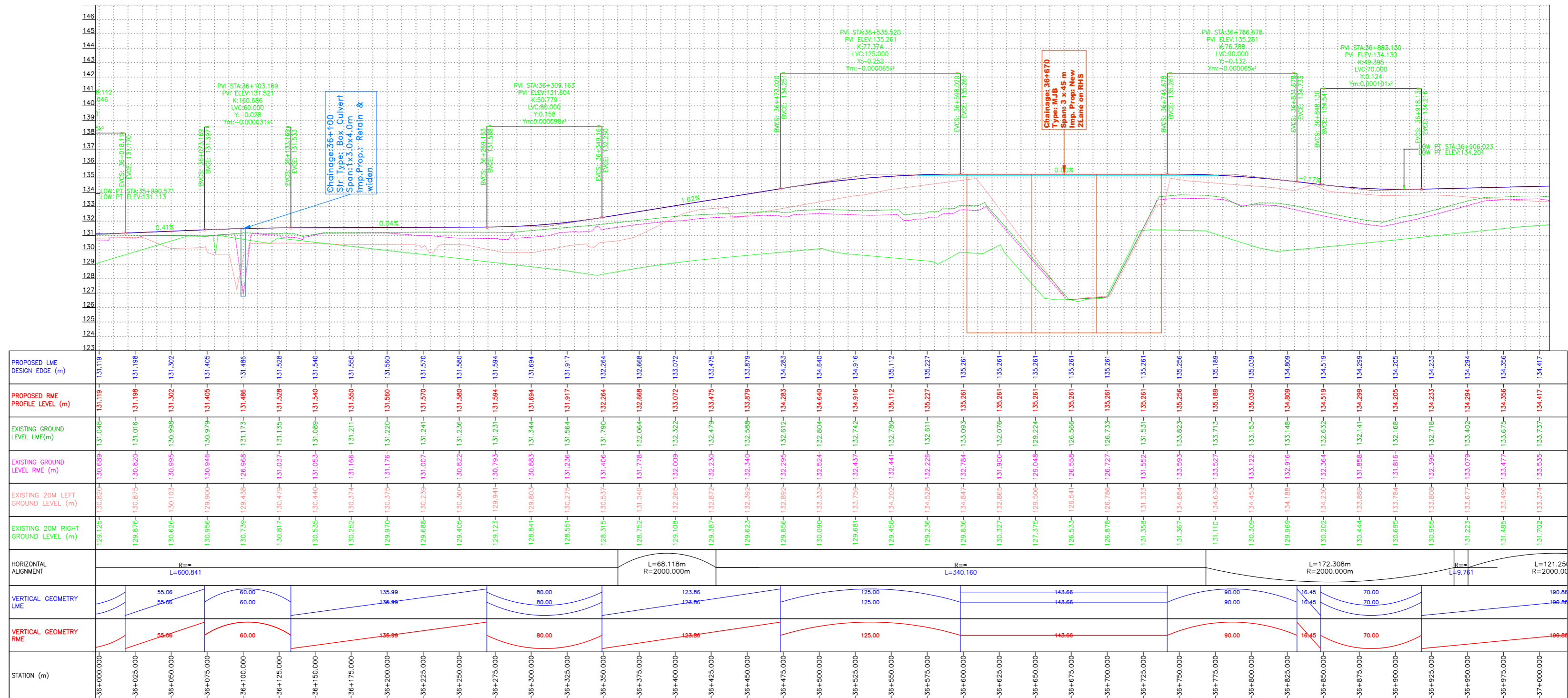
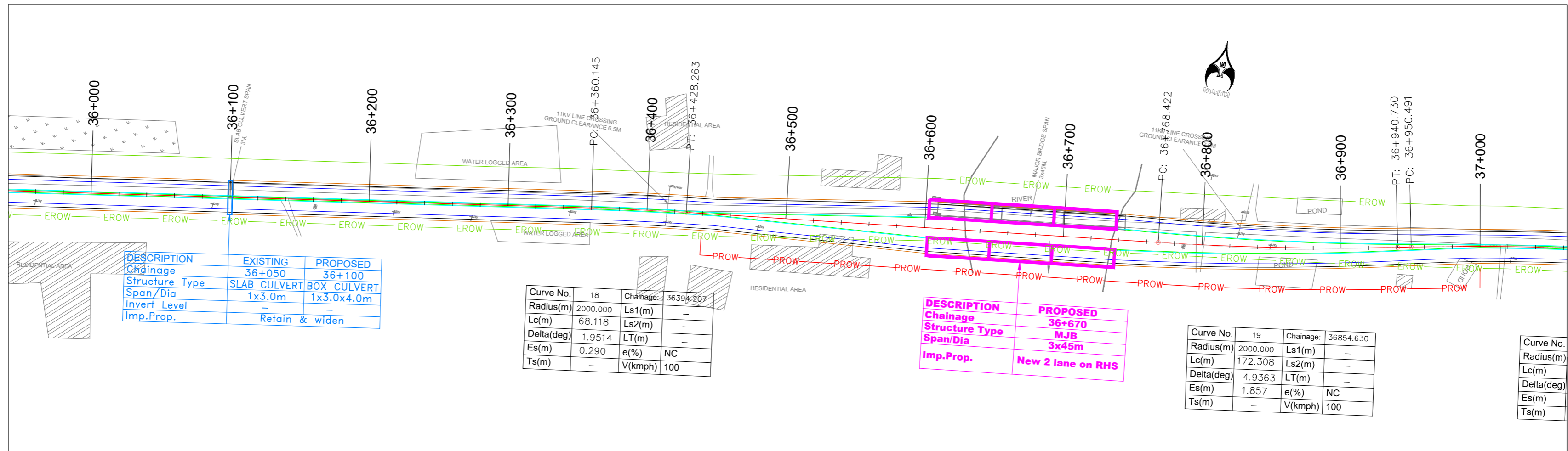
PATH: C:\Users\vbaw\Documents\Other\NH515 Section 2\NH515 S2\6.PLAN PROFILE\Sheet\_NH-515 section2.dwg

<b>CLIENT :</b>  <b>NATIONAL HIGHWAYS AND INFRASTRUCTURE DEVELOPMENT CORPORATION LTD.</b> (MINISTRY OF ROAD TRANSPORT AND HIGHWAYS) GOVERNMENT OF INDIA	<b>PROJECT :</b> <b>CONSULTANCY SERVICES FOR PREPARATION OF DETAILED PROJECT REPORT FOR DEVELOPMENT OF ECONOMIC CORRIDORS, INTER CORRIDORS AND FEEDER ROUTES TO IMPROVE THE EFFICIENCY OF FREIGHT MOVEMENTS IN INDIA UNDER BHARATMALA PARIYOJANA (LOT-1:PACKAGE IV)</b>	<b>DESIGN CONSULTANT:</b>  <b>VOYANTS SOLUTIONS PVT LTD.</b> 403, 4th Floor, Park Centra, Sector-30, NH-8 Gurugram-122001, Haryana, India CIN: U74140HR2004PTC046918 Ph: 0124-4598200, Fax: 0124-4019051, E-mail: info@voyants.in, www.voyants.in	<b>Detailed Project Report</b>				<b>DESIGNED BY</b> PD/PS 	<b>DRAWN BY</b> SS/SP 	<b>CHECKED BY</b> DGR 	<b>APPROVED BY</b> SKC 	<b>TITLE :</b> <b>Plan and Profile</b> (km 34+000 to km 35+000)
			<b>REV. DATE</b> DESCRIPTION	<b>SCALE :</b> HOR 1:2500 VER 1:250	<b>SHEET SIZE</b> A2	<b>DRG. No. :</b> VSPL/1718-082/DPR/PKG-4/NH-515/S2/PP-07					



PATH: C:\Users\vbaw19\Desktop\OTHER\NH515 Section 2\NH515 S2\6.PLAN PROFILE\Sheet\_NH-515 section2.dwg

<b>CLIENT :</b>  <b>NATIONAL HIGHWAYS AND INFRASTRUCTURE DEVELOPMENT CORPORATION LTD.</b> (MINISTRY OF ROAD TRANSPORT AND HIGHWAYS) GOVERNMENT OF INDIA	<b>PROJECT :</b> <b>CONSULTANCY SERVICES FOR PREPARATION OF DETAILED PROJECT REPORT FOR DEVELOPMENT OF ECONOMIC CORRIDORS, INTER CORRIDORS AND FEEDER ROUTES TO IMPROVE THE EFFICIENCY OF FREIGHT MOVEMENTS IN INDIA UNDER BHARATMALA PARIYOJANA (LOT-1:PACKAGE IV)</b>	<b>DESIGN CONSULTANT:</b>  <b>VOYANTS SOLUTIONS PVT LTD.</b> 403, 4th Floor, Park Centra, Sector-30, NH-8 Gurugram-122001, Haryana, India CIN: U74140HR2004PTC046918 Ph: 0124-4598200, Fax: 0124-4019051, E-mail: info@voyants.in, www.voyants.in	<b>Detailed Project Report</b>				<b>DESIGNED BY</b> PD/PS	<b>DRAWN BY</b> SS/SP	<b>CHECKED BY</b> DGR	<b>APPROVED BY</b> SKC	<b>TITLE :</b> <b>Plan and Profile</b> (km 35+000 to km 36+000)
			SCALE : HOR 1:2500 VER 1:250	SHEET SIZE	A2	DRG. No. : VSPL/1718-082/DPR/PKG-4/NH-515/S2/PP-08	REVISION:R1	December 2022			



PATH: C:\Users\vbhaw\OneDrive\Desktop\OTHER\NH515 Section 2\NH515 S2\6.PLAN PROFILE\Sheet\_NH-515 section2.dwg

CLIENT :



**NATIONAL HIGHWAYS AND INFRASTRUCTURE DEVELOPMENT CORPORATION LTD.**  
(MINISTRY OF ROAD TRANSPORT AND HIGHWAYS)  
GOVERNMENT OF INDIA

PROJECT :

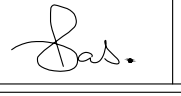



**CONSULTANCY SERVICES FOR PREPARATION OF DETAILED PROJECT REPORT FOR DEVELOPMENT OF ECONOMIC CORRIDORS, INTER CORRIDORS AND FEEDER ROUTES TO IMPROVE THE EFFICIENCY OF FREIGHT MOVEMENTS IN INDIA UNDER BHARATMALA PARIYOJANA (LOT-1:PACKAGE IV)**

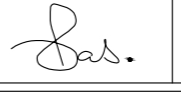



DESIGN CONSULTANT:



**VOYANTS SOLUTIONS PVT LTD.**  
403, 4th Floor, Park Centra,  
Sector-30, NH-8  
Gurugram-122001, Haryana, India  
CIN: U74140HR2004PTC046918  
Ph: 0124-4598200, Fax: 0124-4019051,  
E-mail: info@voyants.in, www.voyants.in

**Detailed Project Report**

DESIGNED BY	DRAWN BY	CHECKED BY	APPROVED BY
PD/PS	SS/SP	DGR	SKC
			
REV. DATE	DESCRIPTION	SCALE :	HOR 1:2500 VER 1:250

DESIGNED BY	DRAWN BY	CHECKED BY	APPROVED BY
PD/PS	SS/SP	DGR	SKC
			
REV. DATE	DESCRIPTION	SCALE :	HOR 1:2500 VER 1:250

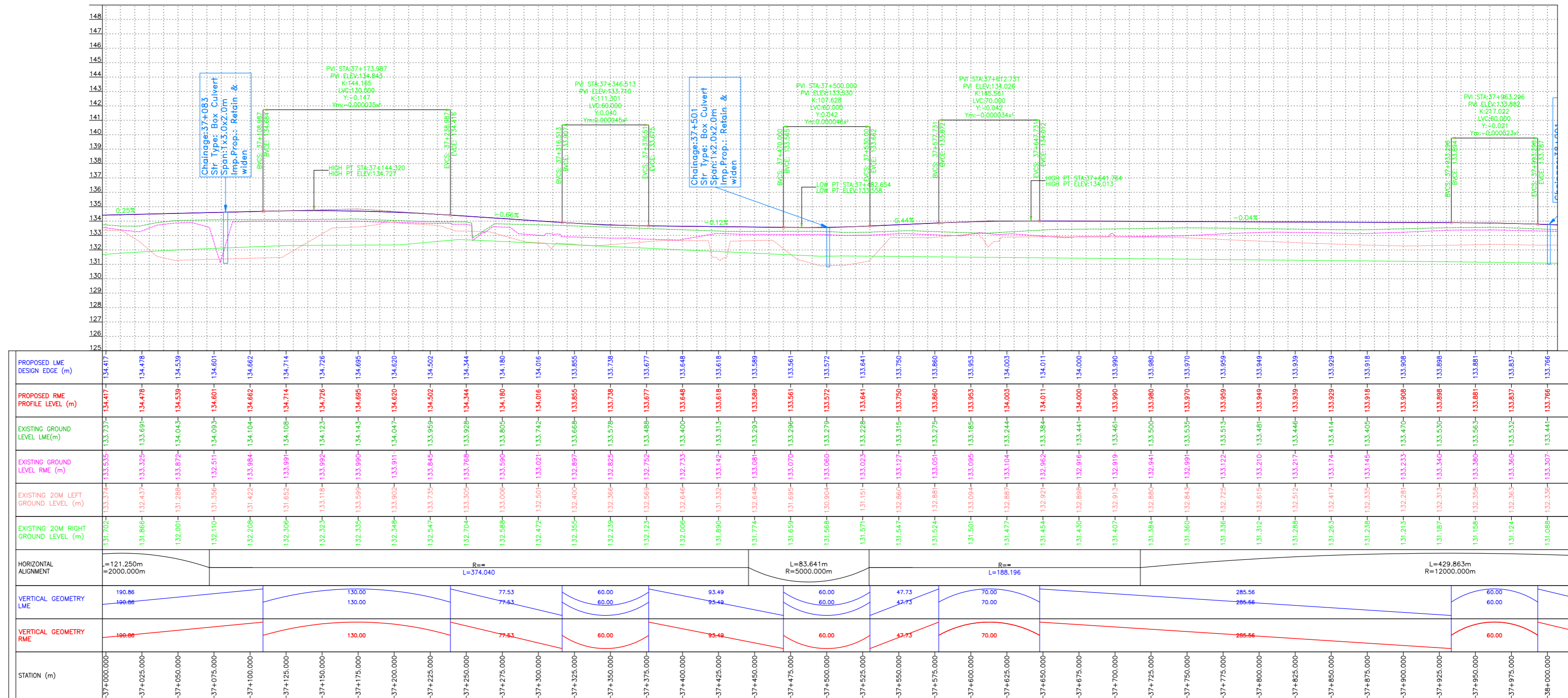
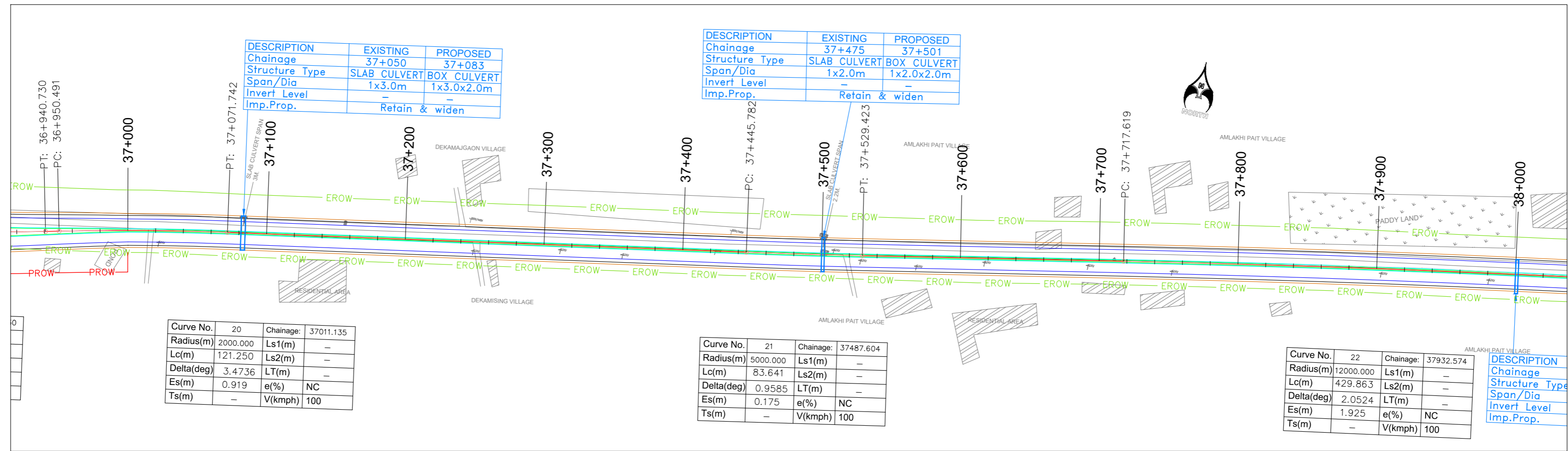
TITLE :

**Plan and Profile**  
(km 36+000 to km 37+000)

DRG. No. :  
VSPL/1718-082/DPR/PKG-4/NH-515/S2/PP-09

REVISION:R1

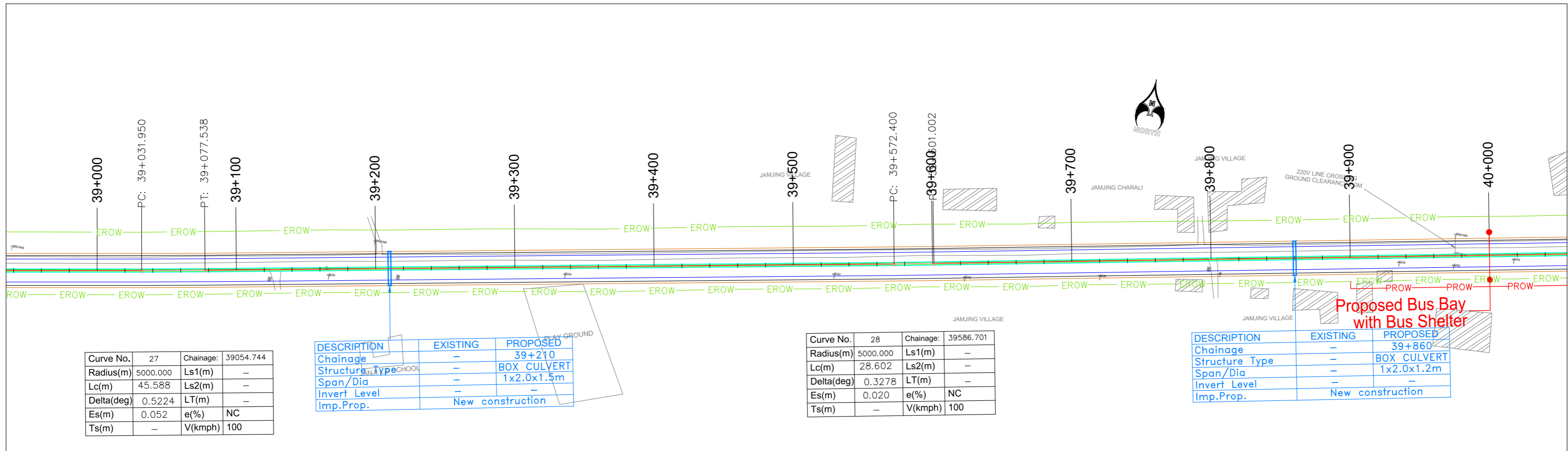
December 2022



PATH: C:\Users\vbaw19\Desktop\OTHER\NH515 Section 2\NH515 S2\6.PLAN PROFILE\Sheet\_NH-515 section2.dwg

<b>CLIENT :</b>  <b>NATIONAL HIGHWAYS AND INFRASTRUCTURE DEVELOPMENT CORPORATION LTD.</b> (MINISTRY OF ROAD TRANSPORT AND HIGHWAYS) GOVERNMENT OF INDIA	<b>PROJECT :</b> <b>CONSULTANCY SERVICES FOR PREPARATION OF DETAILED PROJECT REPORT FOR DEVELOPMENT OF ECONOMIC CORRIDORS, INTER CORRIDORS AND FEEDER ROUTES TO IMPROVE THE EFFICIENCY OF FREIGHT MOVEMENTS IN INDIA UNDER BHARATMALA PARIYOJANA (LOT-1:PACKAGE IV)</b>	<b>DESIGN CONSULTANT:</b>  <b>VOYANTS SOLUTIONS PVT LTD.</b> 403, 4th Floor, Park Centra, Sector-30, NH-8 Gurugram-122001, Haryana, India CIN: U74140HR2004PTC046918 Ph: 0124-4598200, Fax: 0124-4019051, E-mail: info@voyants.in, www.voyants.in	<b>Detailed Project Report</b>				<b>DESIGNED BY</b> PD/PS	<b>DRAWN BY</b> SS/SP	<b>CHECKED BY</b> DGR	<b>APPROVED BY</b> SKC	<b>TITLE :</b> <b>Plan and Profile</b> (km 37+000 to km 38+000)
			REV. DATE	DESCRIPTION	SCALE : HOR 1:2500 VER 1:250	SHEET SIZE	A2	<b>DRG. No. :</b> VSPL/1718-082/DPR/PKG-4/NH-515/S2/PP-10	<b>REVISION:R1</b>	December 2022	



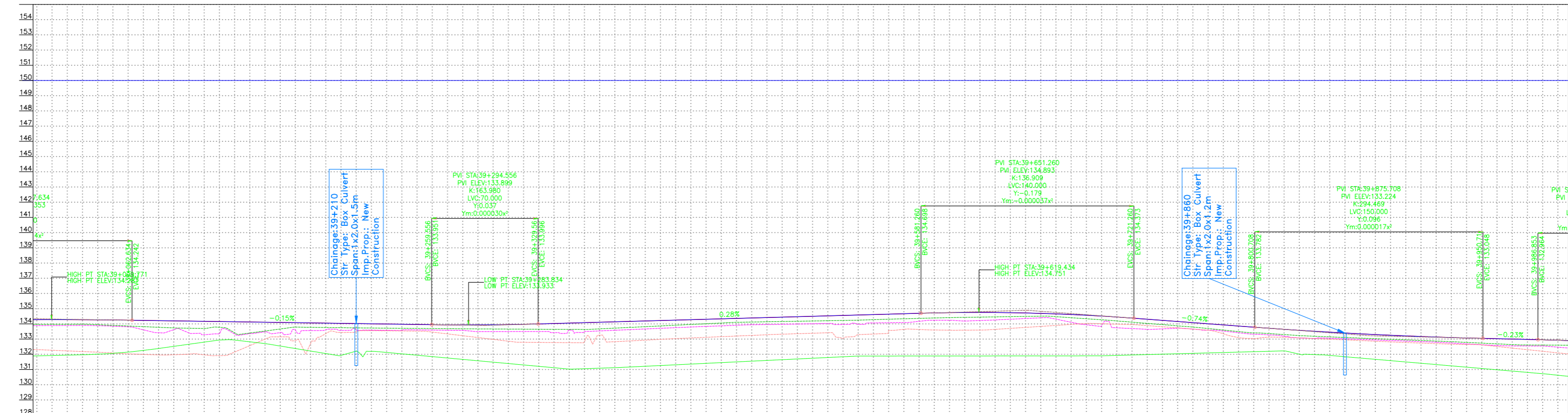


Curve No.	27	Chainage:	39054.744
Radius(m)	5000.000	Ls1(m)	-
Lc(m)	45.588	Ls2(m)	-
Delta(deg)	0.5224	LT(m)	-
Es(m)	0.052	e(%)	NC
Ts(m)	-	V(kmph)	100

DESCRIPTION	EXISTING	PROPOSED
Chainage	-	39+210
Structure Type	-	BOX CULVERT
Span/Dia	-	1x2.0x1.5m
Invert Level	-	-
Imp.Prop.	-	New construction


Curve No.	28	Chainage:	39586.701
Radius(m)	5000.000	Ls1(m)	-
Lc(m)	28.602	Ls2(m)	-
Delta(deg)	0.3278	LT(m)	-
Es(m)	0.020	e(%)	NC
Ts(m)	-	V(kmph)	100

DESCRIPTION	EXISTING	PROPOSED
Chainage	-	39+860
Structure Type	-	BOX CULVERT
Span/Dia	-	1x2.0x1.2m
Invert Level	-	-
Imp.Prop.	-	New construction




PROPOSED LME DESIGN EDGE (m)	PROPOSED RME PROFILE LEVEL (m)	EXISTING GROUND LEVEL LME(m)	EXISTING GROUND LEVEL RME (m)	EXISTING 20M LEFT GROUND LEVEL (m)	EXISTING 20M RIGHT GROUND LEVEL (m)	HORIZONTAL ALIGNMENT	VERTICAL GEOMETRY LME	VERTICAL GEOMETRY RME	STATION (m)
134.285	134.285	133.855	133.855	132.31	131.89				39+000.000
134.278	134.278	133.876	133.876	132.20	131.95				39+025.000
134.259	134.259	133.905	133.905	132.00	132.06				39+050.000
134.224	134.224	133.999	133.999	131.97	132.39				39+075.000
134.187	134.187	134.07	134.07	132.00	132.66				39+100.000
134.150	134.150	134.09	134.09	131.95	132.89				39+125.000
134.113	134.113	134.11	134.11	131.95	132.70				39+150.000
134.076	134.076	134.11	134.11	132.37	132.29				39+175.000
134.039	134.039	134.09	134.09	134.43	131.93				39+200.000
134.002	134.002	134.00	134.00	134.56	132.16				39+225.000
133.965	133.965	133.70	133.70	134.52	131.94				39+250.000
133.935	133.935	133.68	133.68	134.52	131.71				39+275.000
133.941	133.941	133.66	133.66	134.48	131.46				39+300.000
133.884	133.884	133.65	133.65	134.48	131.25				39+325.000
134.053	134.053	133.64	133.64	134.48	131.00				39+350.000
134.123	134.123	133.69	133.69	134.42	131.10				39+375.000
134.183	134.183	133.67	133.67	134.39	131.26				39+400.000
134.262	134.262	133.77	133.77	134.39	131.38				39+425.000
134.332	134.332	134.05	134.05	134.37	131.46				39+450.000
134.402	134.402	134.13	134.13	134.35	131.57				39+475.000
134.472	134.472	134.17	134.17	134.35	131.68				39+500.000
134.541	134.541	134.21	134.21	134.35	131.81				39+525.000
134.611	134.611	134.27	134.27	134.35	131.86				39+550.000
134.681	134.681	134.34	134.34	134.35	131.88				39+575.000
134.758	134.758	134.41	134.41	134.35	131.88				39+600.000
134.790	134.790	134.45	134.45	134.35	131.88				39+625.000
134.717	134.717	134.48	134.48	134.35	131.85				39+650.000
134.639	134.639	134.44	134.44	134.35	131.88				39+675.000
134.514	134.514	134.27	134.27	134.35	131.90				39+700.000
134.345	134.345	134.07	134.07	134.35	131.97				39+725.000
134.159	134.159	133.87	133.87	134.35	132.03				39+750.000
133.973	133.973	133.64	133.64	134.35	132.08				39+775.000
133.787	133.787	133.40	133.40	134.35	132.17				39+800.000
133.611	133.611	133.26	133.26	134.35	132.26				39+825.000
133.457	133.457	133.14	133.14	134.35	132.32				39+850.000
133.323	133.323	133.04	133.04	134.35	132.36				39+875.000
133.211	133.211	132.95	132.95	134.35	132.37				39+900.000
133.120	133.120	132.85	132.85	134.35	132.38				39+925.000
133.050	133.050	132.79	132.79	134.35	132.39				39+950.000
132.981	132.981	132.67	132.67	134.35	132.40				39+975.000
132.927	132.927	132.60	132.60	134.35	132.41				40+000.000

PATH: C:\Users\vbhaw\OneDrive\Desktop\OTHER\NH515 Section 2\NH515 S2\6.PLAN PROFILE\Sheet\_NH-515 section2.dwg

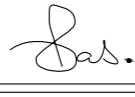



CLIENT :  
  
**NATIONAL HIGHWAYS AND INFRASTRUCTURE DEVELOPMENT CORPORATION LTD.**  
 (MINISTRY OF ROAD TRANSPORT AND HIGHWAYS)  
 GOVERNMENT OF INDIA

PROJECT :  
**CONSULTANCY SERVICES FOR PREPARATION OF DETAILED PROJECT REPORT FOR DEVELOPMENT OF ECONOMIC CORRIDORS, INTER CORRIDORS AND FEEDER ROUTES TO IMPROVE THE EFFICIENCY OF FREIGHT MOVEMENTS IN INDIA UNDER BHARATMALA PARIYOJANA (LOT-1:PACKAGE IV)**

DESIGN CONSULTANT:  
  
**VOYANTS SOLUTIONS PVT LTD.**  
 403, 4th Floor, Park Centra,  
 Sector-30, NH-8  
 Gurugram-122001, Haryana, India  
 CIN: U74140HR2004PTC046918  
 Ph: 0124-4598200, Fax: 0124-4019051,  
 E-mail: info@voyants.in, www.voyants.in

**Detailed Project Report**

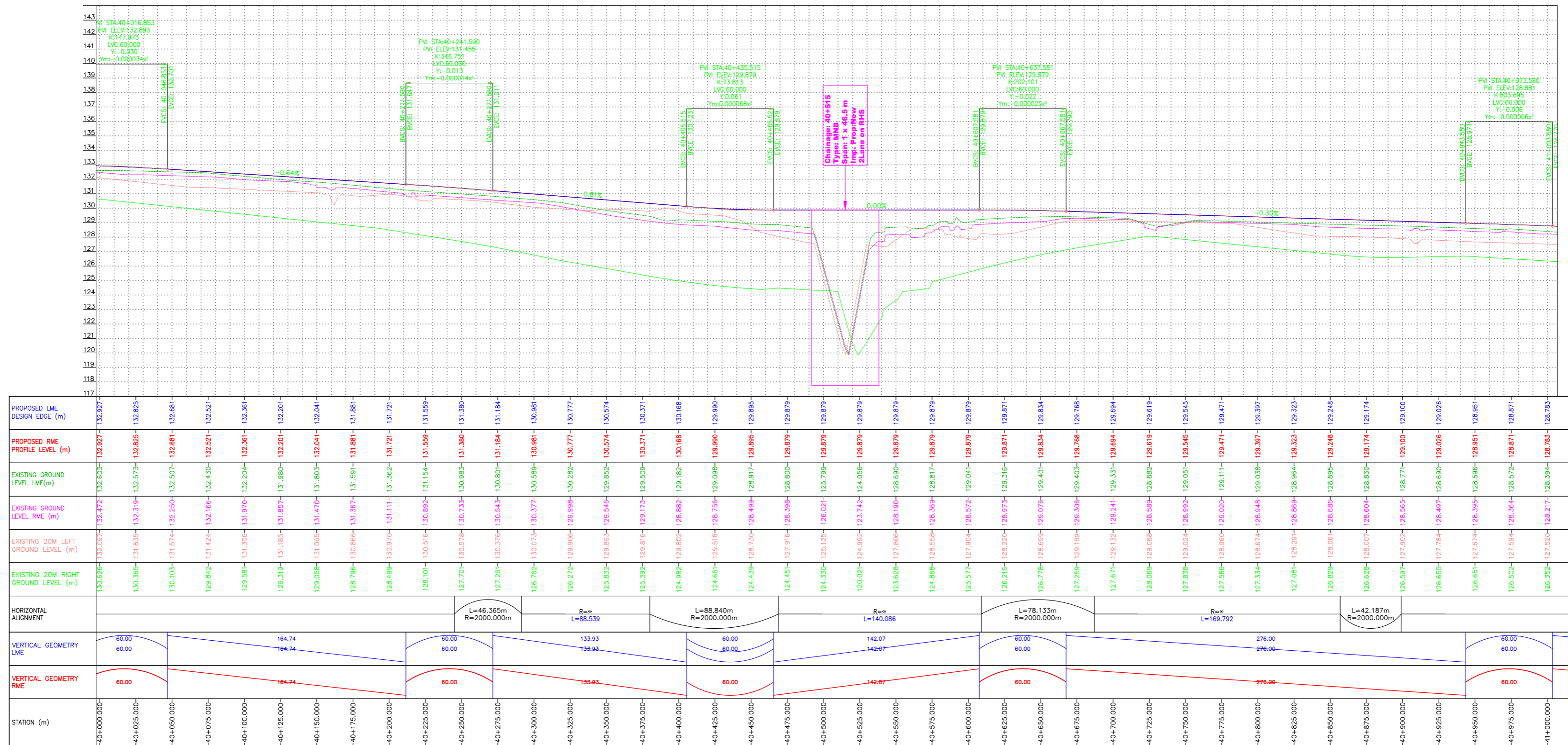
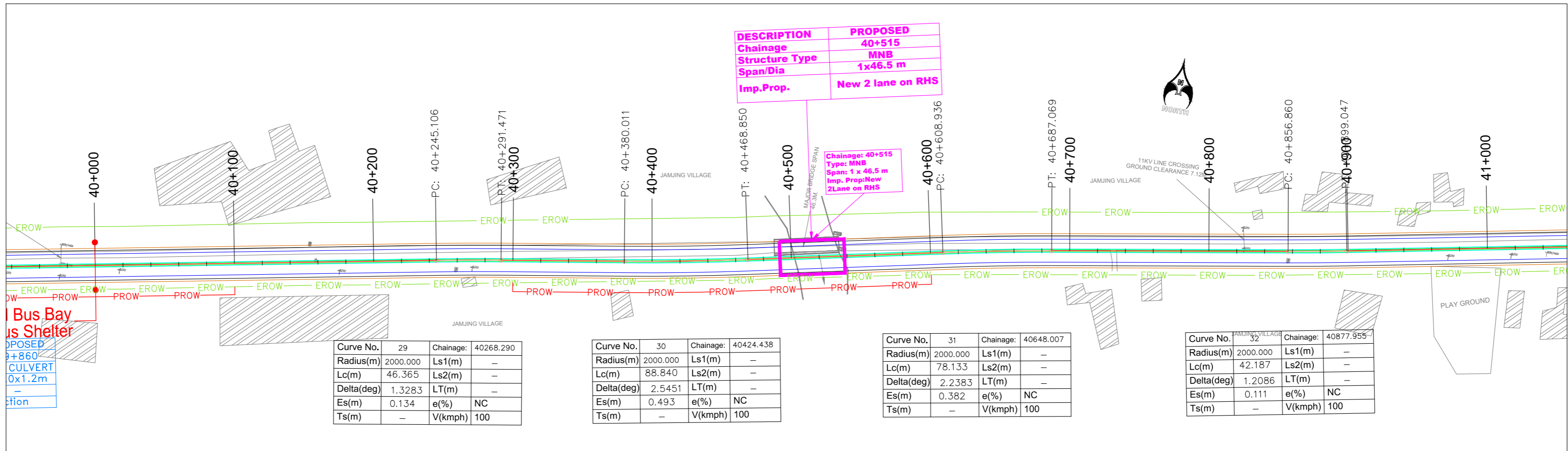
REV.	DATE	DESCRIPTION

DESIGNED BY	DRAWN BY	CHECKED BY	APPROVED BY
PD/PS	SS/SP	DGR	SKC
			
SCALE :	HOR 1:2500 VER 1:250	SHEET SIZE	A2

TITLE :  
**Plan and Profile**  
 (km 39+000 to km 40+000)

DRG. No. :  
 VSPL/1718-082/DPR/PKG-4/NH-515/S2/PP-12

REVISION:R1  
 December 2022



PATH: C:\Users\vbaw19\Desktop\OTHER\NH515 Section 2\NH515 S2\6.PLAN PROFILE\_Sheet\_NH-515 section2.dwg

CLIENT :

**NATIONAL HIGHWAYS AND INFRASTRUCTURE DEVELOPMENT CORPORATION LTD.**  
(MINISTRY OF ROAD TRANSPORT AND HIGHWAYS)  
GOVERNMENT OF INDIA

PROJECT :

**CONSULTANCY SERVICES FOR PREPARATION OF DETAILED PROJECT REPORT FOR DEVELOPMENT OF ECONOMIC CORRIDORS, INTER CORRIDORS AND FEEDER ROUTES TO IMPROVE THE EFFICIENCY OF FREIGHT MOVEMENTS IN INDIA UNDER BHARATMALA PARIYOJANA (LOT-1:PACKAGE IV)**

DESIGN CONSULTANT:

**VOYANTS SOLUTIONS PVT LTD.**  
403, 4th Floor, Park Centra,  
Sector-30, NH-8  
Gurugram-122001, Haryana, India  
CIN: U74140HR2004PTC046918  
Ph: 0124-4598200, Fax: 0124-4019051,  
E-mail: info@voyants.in, www.voyants.in

**Detailed Project Report**

REV.	DATE	DESCRIPTION

DESIGNED BY	DRAWN BY	CHECKED BY	APPROVED BY
PD/PS	SS/SP	DGR	SKC
SCALE :	HOR 1:2500 VER 1:250	SHEET SIZE	A2

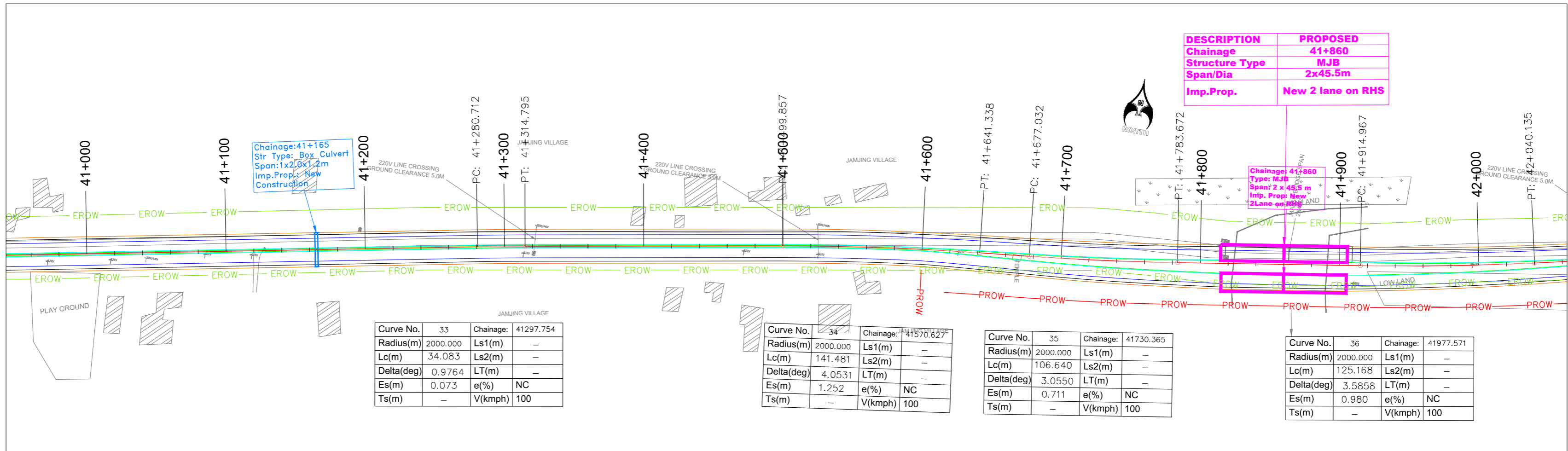
TITLE :

**Plan and Profile**  
(km 40+000 to km 41+000)

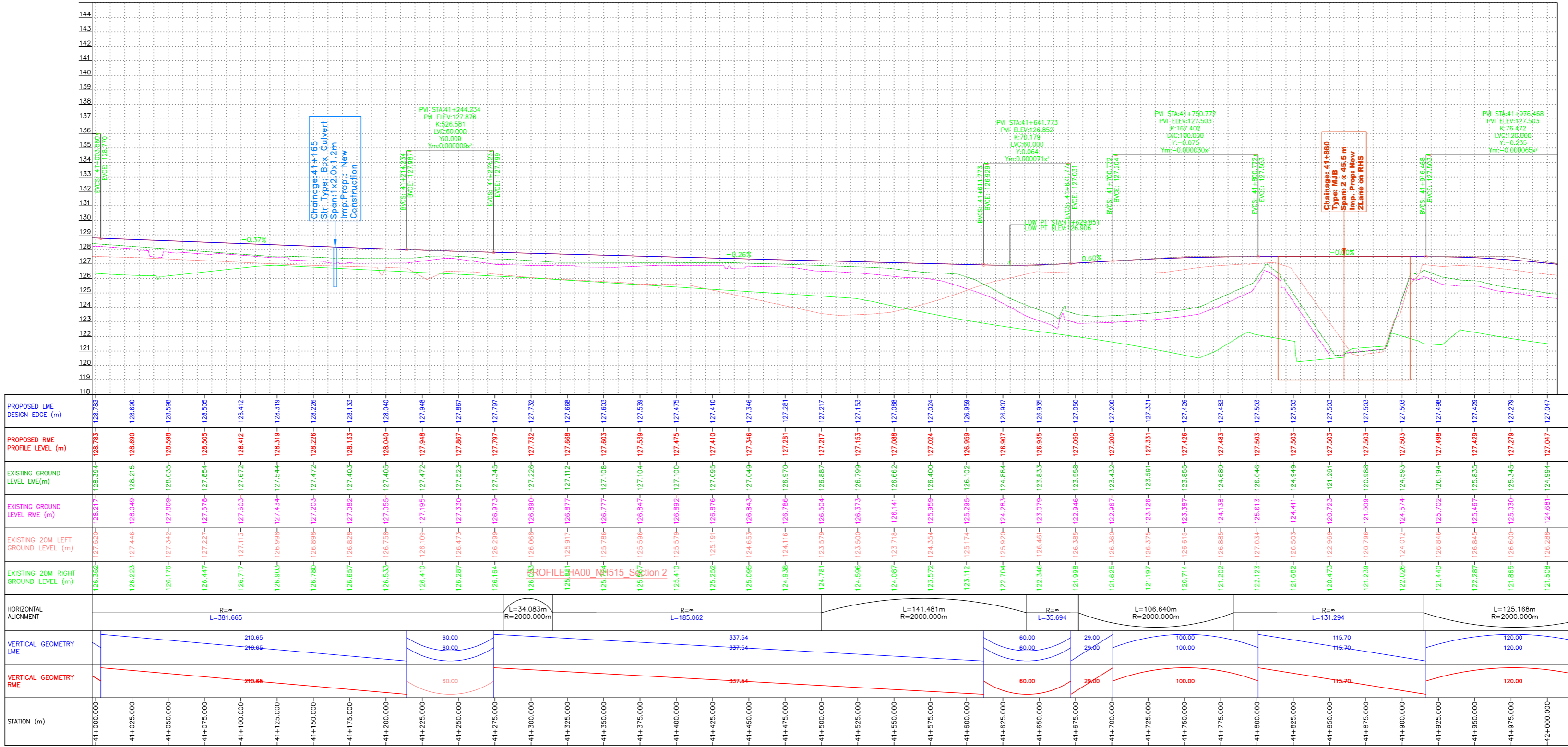
DRG. No. :  
VSPL/1718-082/DPR/PKG-4/NH-515/S2/PP-13

REVISION:R1

December 2022



DESCRIPTION	PROPOSED
Chainage	41+860
Structure Type	MJB
Span/Dia	2x45.5m
Imp.Prop.	New 2 lane on RHS



PATH: C:\Users\vbaw\1\Desktop\OTHER\NH515 Section 2\NH515 S2\6.PLAN PROFILE\Sheet\_NH-515 section2.dwg

CLIENT : **NATIONAL HIGHWAYS AND INFRASTRUCTURE DEVELOPMENT CORPORATION LTD. (MINISTRY OF ROAD TRANSPORT AND HIGHWAYS) GOVERNMENT OF INDIA**

PROJECT : **CONSULTANCY SERVICES FOR PREPARATION OF DETAILED PROJECT REPORT FOR DEVELOPMENT OF ECONOMIC CORRIDORS, INTER CORRIDORS AND FEEDER ROUTES TO IMPROVE THE EFFICIENCY OF FREIGHT MOVEMENTS IN INDIA UNDER BHARATMALA PARIYOJANA (LOT-1:PACKAGE IV)**

DESIGN CONSULTANT: **VOYANTS SOLUTIONS PVT LTD.**  
 403, 4th Floor, Park Centra, Sector-30, NH-8 Gurugram-122001, Haryana, India  
 CIN: U74140HR2004PTC046918  
 Ph: 0124-4598200, Fax: 0124-4019051, E-mail: info@voyants.in, www.voyants.in

**Detailed Project Report**

REV.	DATE	DESCRIPTION

DESIGNED BY	DRAWN BY	CHECKED BY	APPROVED BY
PD/PS	SS/SP	DGR	SKC
<i>Sar.</i>	<i>SP</i>	<i>Adh...</i>	<i>SKC</i>
SCALE :	HOR 1:2500 VER 1:250	SHEET SIZE	A2

TITLE : **Plan and Profile (km 41+000 to km 42+000)**

DRG. No. : **VSP/1718-082/DPR/PKG-4/NH-515/S2/PP-14**

REVISION:R1 December 2022

